



PRTG Sensors Addon Documentation

<https://mid.as/prtg>
v1.13



...making your facilities work for you!





MIDAS

PRTG Sensors Addon

Table of Contents

Table of Contents.....	0
What is PRTG?.....	1
MIDAS Integration with PRTG.....	1
Prerequisites	1
Installing the Addon.....	2
Configuration & Usage.....	2
Release Notes.....	7



PRTG Sensors Addon

What is PRTG?

[PRTG](#) is a leading professional network monitoring software solution, trusted by over 150,000 network/IT administrators worldwide to provide unified monitoring of the performance and reliability of their entire networks, infrastructure and applications.

We also use PRTG here at MIDAS for 24/7 monitoring of our [infrastructure](#).

A free version of PRTG is available (allowing monitoring with up to 100 sensors) alongside licensing options if a greater number of sensors are required.

MIDAS Integration with PRTG

Our PRTG Sensors addon allows you to monitor key parameters and metrics from your self-hosted or cloud-hosted MIDAS room booking system in real-time.

For example, you can keep track on the number of users currently logged into your MIDAS system, the number of failed login attempts, the size of your database, the number of visitors on your premises, the number of bookings taking place today, and much, much more!

Prerequisites

The optional PRTG sensors addon for MIDAS allows for real-time continuous monitoring of various parameters of a [MIDAS booking system](#). This addons requires the following:

- An active [PRTG Network Monitor](#) installation.
- A self hosted or cloud hosted edition of [MIDAS](#) v4.11 (or later)



PRTG Sensors Addon

Installing the Addon

The PRTG Sensors addon is available as an option for MIDAS v4.11 (or later), and can be purchased along with MIDAS, or added at a later stage to an existing system.

- To purchase MIDAS and the PRTG Sensors addon, please visit: <https://mid.as/pricing>
- To add the PRTG Sensors addon to an existing MIDAS installation, please go to MIDAS Admin Options → Manage Addons → Available Addons → PRTG Sensors

Once purchased, the PRTG Sensors addon will become available for one-click installation via MIDAS Admin Options → Manage Addons → Addons Ready To Install → PRTG Sensors.

Configuration & Usage

Once you've installed the PRTG Sensors addon, simply go to MIDAS Admin Options → Manage Addons → Installed Addons → PRTG Sensors to obtain (or generate) an Authorization Key.

This key helps prevent unauthorized access to the sensor data generated by the addon, and may be changed at any time. If you change this key, your MIDAS PRTG Sensors will stop working until you update the Authorization Key contained within the sensor URL in your PRTG installation.

To start actively monitoring your MIDAS system from within your PRTG installation, first decide which parameter(s) you wish to monitor from the sensor table below:

Sensor Code	Type	Sensor Description
AGE	Integer	Number of days since the release of the MIDAS build you're currently running
ALS	Integer	Number of currently active sessions
ALU	Integer	Number of users currently signed in
BAT	Integer	Number of bookings added today
BLD	Integer	MIDAS build number
BMT	Integer	Number of bookings modified today

BDT	Integer	Number of bookings deleted today
BTP	Integer	Number of bookings taking place today
DBS	Float	Current database size (in MB)
ERR	Integer	Number of errors in your MIDAS debug log
EST	Integer	Number of emails sent today
FLA	Integer	Number of failed login attempts today
ICT	Integer	Number of invoices created today
LOK	Integer	Number of locked/suspended user accounts
LUP	Integer	Number of days since last MIDAS update check
NBO	Integer	Number of bookings
NCL	Integer	Number of clients
NOR	Integer	Number of organizations
NUS	Integer	Number of users
NVE	Integer	Number of venues
OBR	Integer	Number of outstanding booking requests
SOS	Integer	Number of staff on site
VER	Float	MIDAS version number
VIS	Integer	Number of visitors on site



PRTG Sensors Addon

Next, construct a URL containing your authorization key and a comma separated list of the parameters you wish to monitor as follows:

```
https://your-midas-url/prtg.pl?key=<authorization-key>&sensors=<comma-separated-list-of-sensor-codes>
```

So for example, if you wish to monitor the number of currently signed in user accounts in your MIDAS system ("ALU") and the number of failed login attempts today ("FLA") in a single PRTG sensor, the resulting URL would be:

```
https://your-midas-url/prtg.pl?key=<authorization-key>&sensors=ALU,FLA
```

Next within your PRTG installation, create a new "[HTTP Content](#)" Sensor:



In the Sensor Settings dialog, set the following:

- **Sensor Name:** The name for your PRTG sensor i.e. "MIDAS"
- **Script URL:** The URL to your MIDAS PRTG Sensors addon you've constructed above, i.e. "https://your_midas_url/prtg.pl?key=authorization_key&sensors=ALO,FLA"
- **Value Type:** Select "Integer" if you're exclusively monitoring MIDAS parameters which return integer values, otherwise select "Float".
- **Number of Channels:** IMPORTANT: Set this to the same number of sensor codes present in the comma separated list you constructed for the above URL. In the above example, this number is "2" ("sensors=ALO,FLA")



PRTG Sensors Addon

Add Sensor (Step 2 of 2) BASIC SENSOR SETTINGS

Sensor Name **MIDAS**

Parent Tags

Tags

Priority ★★★★★

HTTP SPECIFIC

Timeout (Sec.) **60**

Script URL **https://your_midas_url/api.pl?key=authorization_key&sensors=ALO,FLA**

Value Type ☒ Integer ☐ Float

Number of channels **2**

Please modify channel names and units in the sensor's channel settings (accessible via the "Overview" tab).

[Continue >](#) [Cancel](#)

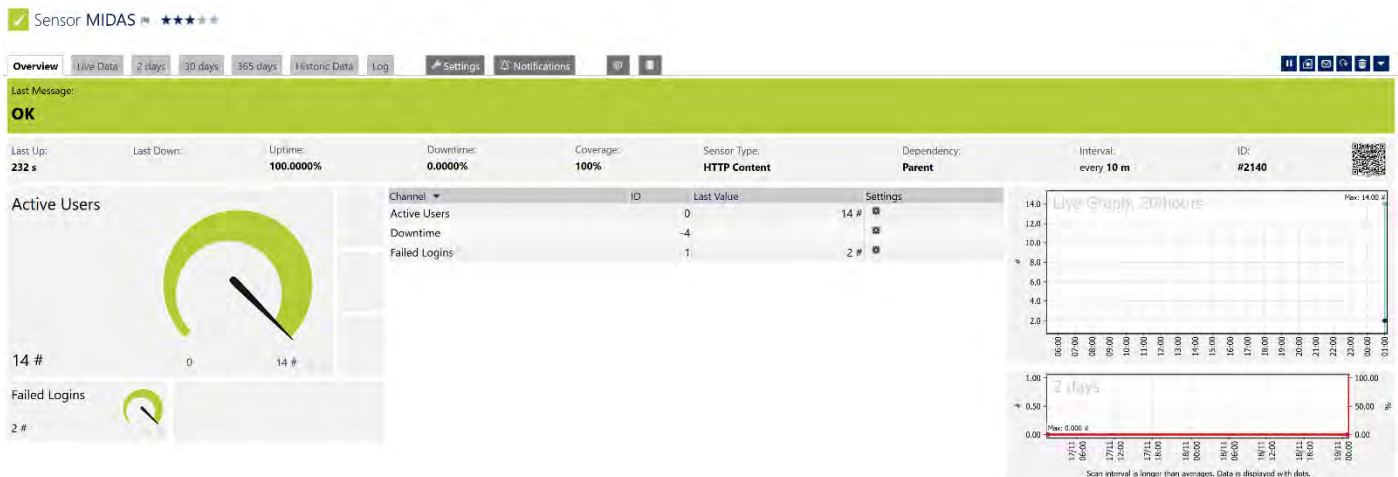
Click "Continue" and PRTG will create your new sensor:





PRTG Sensors Addon

By default, channels in your newly created sensor will be named "Value 1", "Value 2", etc, however, you can rename these to match the corresponding MIDAS parameters being monitored, via "Edit Channel Settings":



Note: The channel order in your PRTG sensor is determined by the order of comma separated sensor codes passed in the URL you supplied. In our example (where the sensor string "ALO,FLA" was supplied), the first channel being monitored is "ALO" (current logins) and the second channel is "FLA" (number of failed login attempts)

Tip: You can use the same URL (with different sensor codes) to create additional sensors within your PRTG installation and monitor other metrics and parameters of your MIDAS system in separate sensors.

Release Notes

v1.13

14th July 2025

- Added: "BKU" sensor (Number of hours since last backup)
- Added: "NBF" sensor (Number of future bookings)

v1.12

7th April 2025

- Added: "ALU" sensor (Number of users currently signed in)
- Changed: "ALO" to "ALS" (Number of currently active sessions)

v1.11

3rd April 2024

- Added "BLD" sensor (MIDAS Build Number)
- Added "VER" sensor (MIDAS Version Number)

v1.10

14th February 2022

- Update: Compatibility for MIDAS v4.30

v1.09

25th June 2020

- Fixed: Unable to save settings

v1.08

24th March 2020

- Fixed: No sensor output in v1.07

v1.07

4th March 2020

- Fixed: Server error no longer produced if no databases defined



PRTG Sensors Addon

v1.06	
13 th May 2019	· Update: Compatibility with MIDAS v4.22
v1.05	
18 th December 2018	· Fixed: Support for Perl 5.26+
v1.04	
27 th September 2018	· Update: Icon compatibility for MIDAS v4.20
v1.03	
23 rd March 2018	· Optimization: Code optimization
v1.02	
3 rd May 2017	· New: "ERR" sensor - (Number of errors in debug log)
v1.01	
22 nd July 2016	· New: "AGE" sensor - (Number of days since MIDAS build date) · New: "LUP" sensor - (Number of days since last update check)
v1.00	
17 th December 2015	· Initial release of the PRTG Sensors Addon (for MIDAS v4.11+)

For the most up-to-date PRTG Sensors addon documentation,
please visit <https://mid.as/prtg>