



Digital Signage Documentation

<https://mid.as/digital-signage>
v1.44



...making your facilities work for you!





Table of Contents

MIDAS Digital Signage Addon	2
Overview.....	2
Prerequisites.....	2
Typical Infrastructure Configurations.....	3
Single signage screen.....	3
Multiple signage screens all showing the same content	3
Two signage screens showing different content from a single computer.....	3
Multiple signage screens showing different content	4
iPad / Tablet:.....	4
"Smart" TVs:.....	4
Installing the Addon	5
Settings	5
Current Screens.....	6
Variables - Global	6
Variables - Fields	6
Enabled?.....	6
Screen Number	6
Screen Name.....	6
Screen URL	6
Max Items on Screen.....	7
Screen Refresh	7
Next Screen	7
Limit Screen To.....	7
Screen Preview	7
Screen Template	7
Custom .css Stylesheet	8
Save Changes.....	8
Implementing your Signage	8
For PC/Desktop Infrastructures:	8
For iPad/Tablet Infrastructures:.....	9
Appendix A – Global Variables	10
Appendix B – Field Variables	10
Appendix C – Template Example.....	12
Release Notes.....	15



MIDAS Digital Signage Addon

Overview

The optional Digital Signage addon for MIDAS (<https://mid.as>) allows you to automatically display a stream of upcoming room bookings on display devices (screens) within communal areas of your venue, and/or outside individual rooms.

Prerequisites

In order to use the Digital Signage addon for your MIDAS room booking system, you will need to be running at least MIDAS v4.03, and have either;

- **Display devices** (TV/Monitors) installed in your venue. These screens should be connected to a computer with a network connection to the server where your MIDAS system resides. If you wish to have multiple screens displaying different content at the same time (in the case of a separate screen outside each room showing only that room's bookings), each screen would require a connection to a different computer (or separate graphics card output) which in turn has a network connection to the server where your MIDAS resides. or;
- **iPad/Tablet** devices installed in your venue. These devices should have a modern web browser installed, an active Wi-Fi connection, and be able to connect to the server where your MIDAS (and Digital Signage addon) run. You may also like to consider some form of enclosure for your mounted iPads/tablets to prevent unauthorized interaction with the devices.
- **"Smart" TVs** installed in your venue – provided that they have a fully-fledged and modern web browser installed and an active internet connection.

Note: Display devices, computers, and any other associated hardware and physical infrastructure are not supplied by MIDAS.

A basic knowledge of [HTML](#) is also required to compose your screen templates.

Typical Infrastructure Configurations

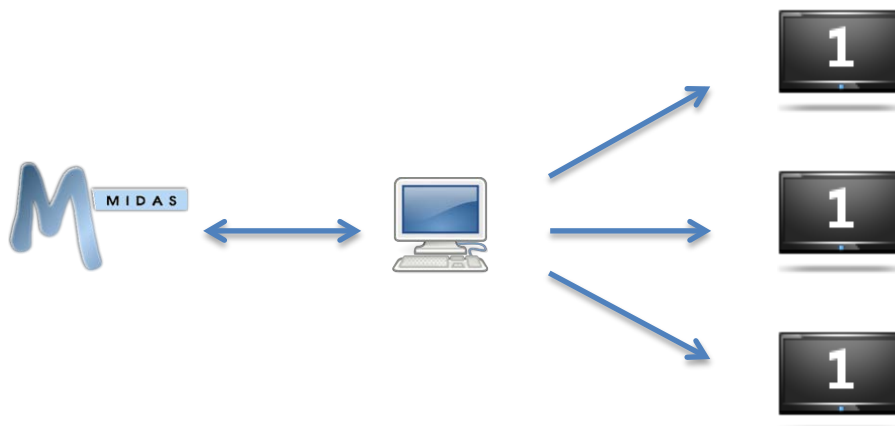
Single signage screen

(1 computer (with a connection to MIDAS), 1 display device)



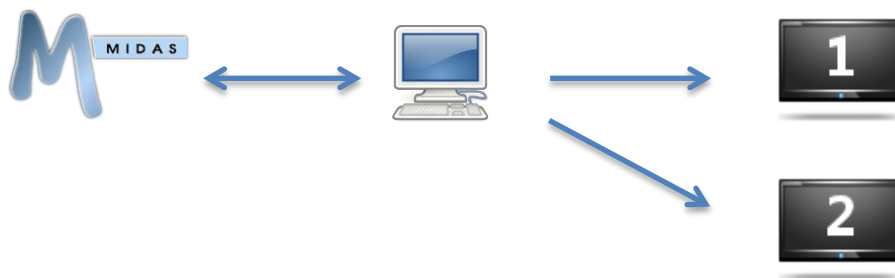
Multiple signage screens all showing the same content

(1 computer (with a connection to MIDAS), 1 VGA splitter/distribution amplifier (or similar), multiple display devices)



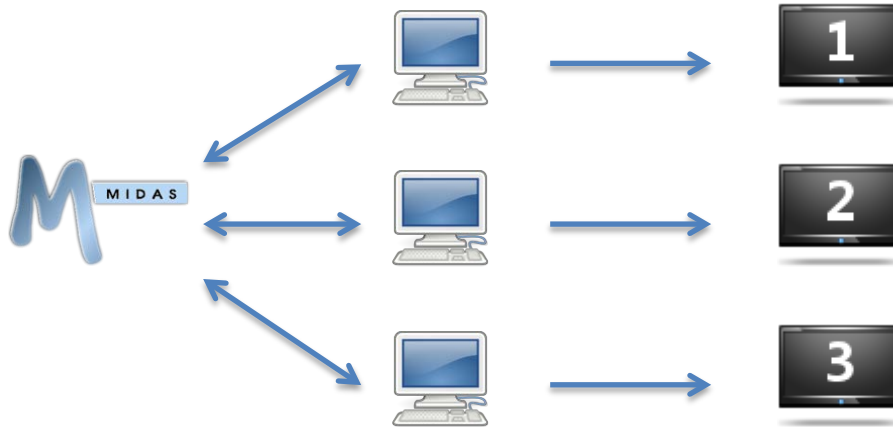
Two signage screens showing different content from a single computer

(1 computer (with a connection to MIDAS) with a dual-head graphics card), two display devices)



Multiple signage screens showing different content

(Multiple computers (with connections to MIDAS), multiple display devices)



iPad / Tablet:

Instead of the above setups where a central computer (or computers) output their display to various screens/monitors, you can instead have iPads or other tablets around your venue (outside rooms, etc) and have these as your screens, showing generated content from the Digital Signage add-on.

This method has the additional benefit of not having the same cabling requirements as the PC/Desktop/Server infrastructure configuration (i.e. you don't have to cable each iPad/Tablet back to a central server)

"Smart" TVs:

If your "Smart" TV has a fully-fledged and modern web browser installed, then you may be able to use our Digital Signage add-on without any additional hardware!

However, many "Smart" TVs (particularly older "Smart" TVs) have very limited web browsing capabilities and browsers, and therefore we would strongly recommend accessing our [demo Digital Signage add-on](#) through your Smart TV first to check that it displays and functions as expected.

Installing the Addon

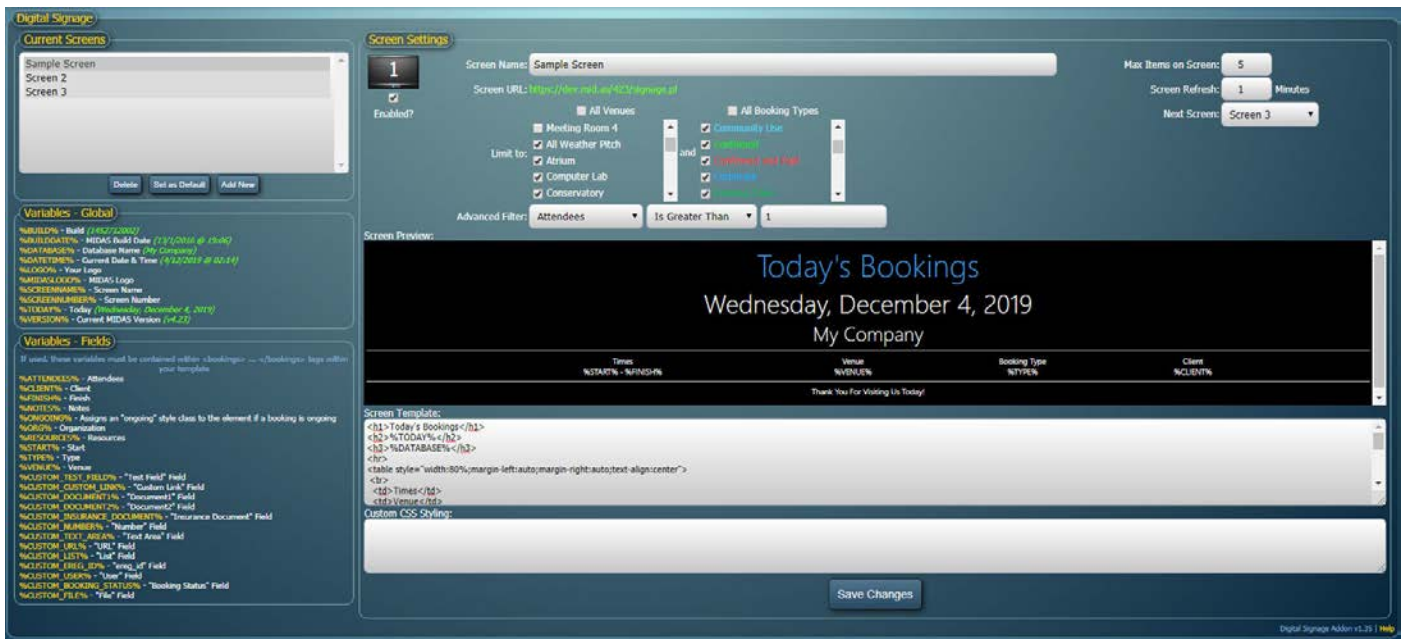
The Signage addon is available as an option for MIDAS v4.03 (or later), that can be purchased along with MIDAS, or added at a later stage.

- To purchase MIDAS and the Digital Signage addon, please visit: <https://mid.as/pricing>
- To add the Signage addon to an existing MIDAS installation, please go to MIDAS Admin Options → Manage Addons → Available Addons → Digital Signage.

Once purchased, the Digital Signage addon will become available for one-click installation via MIDAS Admin Options → Manage Addons → Addons Ready To Install → Digital Signage.

Once installed, various Digital Signage settings are available via MIDAS Admin Options → Manage Addons → Installed Addons → Digital Signage.

Settings



Above: The Signage administrative interface (MIDAS Admin Options → Manage Addons → Installed Addons → Signage)

From this screen you can define and design the content of each of your display screens. The following settings may be found in this area...



Current Screens

This is a list of all the signage screens you've already defined.

To define a new screen, click "Add New" below the list.

To set an existing screen to be the "default" screen, highlight it in the "Current Screens" list and click "Set as Default". An asterisk will denote the current "default" screen.

Any display device not set to display a specific screen will display the "default" screen instead.

To remove a screen, select it and click the "Delete" button.

Variables - Global

Lists a number of variables that you can use within your screen templates.

These variables will be substituted for corresponding content on your actual display screens.

A full list of Global Variables and their meanings may be found in Appendix A

Variables - Fields

Similar to global variables, when field "field" variables are used within your screen templates, they are substituted with live data from corresponding booking fields on your actual display screens.

A full list of Field Variables and their meanings may be found in Appendix B

Field variables must be placed within `<bookings>...</bookings>` tags

Enabled?

Allows you to "disable" individual screens. When a screen is disabled, it will not show any booking information on your display devices, and instead display a "Screen Currently Disabled" message.

Screen Number

The internal number representing the screen you are currently defining.

This number cannot be changed, but is used for screen addressing. For example, to display Screen Number 4 on a display device, the URL for that device would be:

`https://your_midas_url/signage.pl?screen=4`

Screen Name

A name by which you can use to identify the screen you are defining.

This name will appear in the "Current Screens" list and can be shown on your display device if desired through the inclusion of the `%SCREENNAME%` variable within your screen templates

Screen URL

The URL which you should point your display device(s) to in order to display the screen you're currently configuring

Max Items on Screen

The maximum number of bookings that will be shown on the screen at any one time. Depending upon the font size used, and the resolution of your display devices, you may need to increase/decrease this number. The default is 5

Screen Refresh

How frequently (in minutes) booking data on the screen should refresh.



NOTE: The minimum interval that "Screen Refresh" can be set to is governed by the "Default Time Interval" setting, which can be found via MIDAS Admin Options → Manage MIDAS → Appearance → Date/Time Settings

Next Screen

If left blank, when the Screen Refresh interval is reached, the current screen will simply refresh. If a "Next Screen" is specified, when the Screen Refresh interval is reached, the selected "Next Screen" will be displayed. This allows you to create "PowerPoint-like" "slide shows" of your screens! For example, on a single display device you could have Screen 1 showing for 2 minutes, followed by Screen 2 showing for 5 minutes, and then Screen 1 again, etc

Limit Screen To

These settings allow you to control which bookings should be included on the current screen. By default, "All Venues" and "All Booking Types" will be shown.

This is useful if you have a general display device in a reception area showing an overview of every booking.

You can "untick" either of these options to limit the range of venues/booking types that are shown. For example, if you have a dedicated display device situated directly outside "Meeting Room A", you may only want to display bookings for "Meeting Room A" on that particular screen. You would therefore untick "All Venues", and select just "Meeting Room A" from the venues list

Screen Preview

An example of how your screen will look on your display device.

Modifications to the Screen Template (see below) will be shown here in real time.

Screen Template

This is where you design the look and content of your screen using standard HTML code, Global, and Field variables.

Several template examples may be found in Appendix C



Custom .css Stylesheet

This field allows you to precisely control all the visual elements of your signage screen through the use of CSS (Cascading Style Sheets). This field will accept the URL to an external .css file, or (starting from v1.13 of the Digital Signage addon) raw CSS code directly.

Save Changes

Once you're happy with your screen settings and template, click the "Save Changes" button to save your settings.

You can edit the template and/or settings for a previously saved screen at any time by simply selecting it in the "Current Screens" list.

Implementing your Signage

Once you've defined your screen(s) the next stage is to make them appear on your signage devices.

For PC/Desktop Infrastructures:

To display the same screen on one or more signage devices, your signage devices need to be connected to a computer with a modern web browser and a network connection to the server where your MIDAS resides.

1. Open your web browser on the computer connected to your display devices, and navigate to:

https://your_midas_url/signage.pl

2. Whichever screen you've set as the "default" screen (or in the case where only one screen has been defined, this screen) will then be displayed in your browser (and therefore also on your connected signage device)
3. Make your browser "full screen". If you're running a modern browser that supports the full screen API, you can simply click within your signage screen, and MIDAS will automatically place your browser in full screen mode (Note: MIDAS also automatically hides your cursor if it is "hovering" within your signage screen)

To display different screens on different display devices around your venue, each display device will need connecting to a different computer with a modern web browser and a network connection to the server where your MIDAS resides, or a single computer with a multi-head graphics card.

Setup each computer as above, but append "?screen=x" to the end of the URL, where "x" is the number of the screen number you've setup within MIDAS that you wish to display on this device – i.e.

https://your_midas_url/signage.pl?screen=1



Digital Signage Documentation

So, to display Screen 1 on one display device and Screen 2 on another display device, you would need to point their respective computers to:

`https://your_midas_url/signage.pl?screen=1`
`https://your_midas_url/signage.pl?screen=2`

For iPad/Tablet Infrastructures:

1. Open the web browser on your iPad/Tablet, and navigate to:
`https://your_midas_url/signage.pl`
2. Whichever screen you've set as the "default" screen (or in the case where only one screen has been defined, this screen) will then be displayed in your iPad/Tablet's browser.
3. Add the current browser window to your [Home Screen](#).
4. Close the browser, and open the "MIDAS Digital Signage" shortcut on your Home Screen. Your iPad/Tablet will then display (full screen) your Digital Signage feed.

To display different signage screens on different iPad/Tablet devices, follow the above steps on each device, but append "?screen=x" to the end of the URL, where "x" is the number of the screen you've set up within MIDAS that you wish to display on the current iPad/Tablet - i.e.

`https://your_midas_url/signage.pl?screen=1`

For "Smart TV" Infrastructures:

1. Open the web browser on your Smart TV and navigate to:
`https://your_midas_url/signage.pl`
2. Whichever screen you've set as the "default" screen (or in the case where only one screen has been defined, this screen) will then be displayed in your Smart TV's browser.
3. If your Smart TV's browser allows, make the displayed page go "Full Screen".

To display different signage screens on different Smart TVs, follow the above steps on each device, but append "?screen=x" to the end of the URL, where "x" is the number of the screen you've set up within MIDAS that you wish to display on the current Smart TV - i.e.

`https://your_midas_url/signage.pl?screen=1`

Appendix A – Global Variables

The following global variables may be used within your Screen Templates and will be substituted for corresponding content on your display devices.

Variable	Description	Example value
%BUILD%	Current MIDAS build number	1333703520
%BUILDDATE%	Current MIDAS build date/time	6/4/2017 @ 09:12
%DATABASE%	The name of your current MIDAS database (usually your Organization name). You can rename your database via MIDAS Admin Options → Manage MIDAS → Database	My Company
%DATETIME%	The current date/time shown in the format defined via MIDAS Admin Options → Manage MIDAS → Appearance → Date/Time Settings	30/7/2014 @ 20:15
%LOGO%	Your company/organization logo. Please see " How to add your company/corporate logo "	<Your logo>
%MIDASLOGO%	The MIDAS logo	<MIDAS logo>
%NOW%	The current time, updating in real-time	12:42
%SCREENNAME%	The name of the current screen	Screen 1
%SCREENNUMBER%	The internal number of the current screen	1
%TODAY%	A "nice" representation of the current date	Saturday, February 12, 2022
%VERSION%	Current MIDAS version	v4.32

Appendix B – Field Variables

Field variables must be contained within a set of "booking tags" within your template – these "booking tags" define the section of code that is to be repeated (looped) for each booking to be displayed. For template examples, please see Appendix C

Booking Tags	Description
<bookings></bookings>	This will display ongoing and upcoming bookings for the rest of the day
<bookings_now></bookings_now>	This will only display bookings which are taking place at the present time
<bookings_next></bookings_next>	This will only display bookings for the remainder of the day which have yet to start



Digital Signage Documentation

The following variables can be used within a set of booking tags in your Screen Templates and correspond to booking fields within MIDAS. These variables will be automatically substituted with booking data on your display devices.

Setting	Description	Example value
%ATTENDEES%	Number of attendees	10
%CLIENT%	Name of client	Joe Bloggs
%FINISH%	Booking finish time	10:00
%NOTES%	Booking notes	This booking may finish early
%ONGOING%	Assigns an “ongoing” style class to the template element if the booking is ongoing. This could be used to display bookings currently taking place in a different color to other bookings. See Appendix C for examples	
%ORG%	Client’s organization	My Company
%RESOURCES%	List of resources assigned to booking	x1 Laptop x1 Data Projector
%START%	Booking start time	09:00
%TYPE%	Booking type	Internal Meeting
%VENUE%	Name of venue	Meeting Room A
%CUSTOM_x%	If you’ve defined your own custom booking fields within MIDAS, you can include them on your screens using the “%CUSTOM_x%” variable (where “x” is the internal name of your custom booking field). For example, if you’ve added a custom field to your MIDAS named “Room Layout”, you would include data from this field on your signage screen with the variable “%CUSTOM_ROOM_LAYOUT%”	

Appendix C – Template

Example

Below is a typical Screen Template example, how it may appear on your display device, and a detailed explanation of how the template translates to what your visitors will see on screen...

Example Screen Template

```
<h1>Today's Bookings</h1>
<h2>%TODAY%</h2>
<h3>%DATABASE%</h3>
<table>
  <tr>
    <td>Times</td>
    <td>Venue</td>
    <td>Booking Type</td>
    <td>Client</td>
  </tr>
  <bookings>
    <tr%ONGOING%>
      <td>%START% - %FINISH%</td>
      <td>%VENUE%</td>
      <td>%TYPE%</td>
      <td>%CLIENT%</td>
    </tr>
  </bookings>
</table>
<br>Thank You For Visiting Us Today!
```

Example Screen Output

Today's Bookings

Wednesday, April 15, 2020

My Company

Times	Venue	Booking Type	Client
08.00 – 09.00	Room 1	Meeting	Joe Bloggs
09.00 – 11.30	Room 4	Training	Jane Doe
09.15 – 10.45	Room 2	Exam	Joe Bloggs

Thank You For Visiting Us Today!

Powered by <https://mid.as>

Explanation

This simple screen starts by displaying 3 headings (<h1>, <h2>, and <h3>).

"Today's Bookings" is the first "static" heading.

The other two headings use global variables in the template, which are substituted with corresponding values when displayed on your display device(s).

The next section of the template is a standard HTML table.

The first row contains columns names for "Times", "Venue", "Booking Type", and "Client"

Notice that the second row of the table is surrounded by <booking></booking> tags (indicated in blue) – this indicates to MIDAS that this section of code should be repeated for each booking displayed.

In this example, because the second table row is enclosed within <booking></booking> tags, a new row will be inserted for each booking. (Note: <booking></booking> tags will be automatically stripped from the final output display in order to generate valid HTML)

The field variables in this row are substituted for real booking data when displayed on your display device(s)

Note the presence of the %ONGOING% variable (indicated in green) – this tells MIDAS that if the booking is currently ongoing ("in progress") to apply an "ongoing" class to the element.

So, for ongoing bookings <tr%ONGOING%> would be substituted with <tr class=ongoing>



Digital Signage Documentation

For all other bookings, `<tr%ONGOING%>` would be substituted with `<tr>`

If we assume that the Example Screen Output shown above was what was displayed on the screen at 08.15 in the morning – at that point in time, one booking is “ongoing” – the one highlighted on the screen in red.

You could define the color/style of our “ongoing” class in an external style sheet and then include it using the “Custom .css Stylesheet” option.

In your external style sheet, you can change the styling of this special “ongoing” class, as follows:

```
.ongoing{color:yellow}
```



Release Notes

See <https://mid.as/digital-signage/release-notes>

For the most up-to-date Digital Signage documentation,
please visit <https://mid.as/digital-signage>